



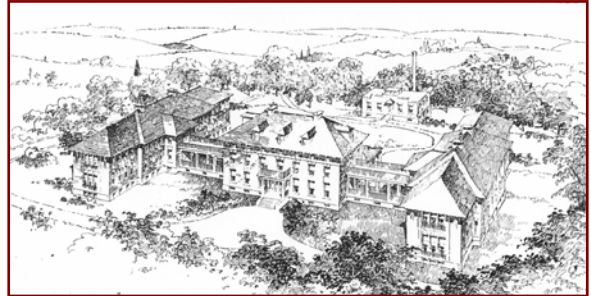
St. John of God Hospital Campus Redevelopment Project Boston, Massachusetts

Date of Performance: 2002

Client: Epsilon Associates, Inc.

A team of architectural historians prepared a narrative history of the St. John of God Hospital Campus in advance of the demolition of several campus buildings and the redevelopment of the site into a multi-use residential care facility. Located in the Brighton section of the City of Boston, the St. John of God campus has a history of land use that dates to the Colonial period. The campus is located on land that initially served as a cattle-grazing area and became part of a farmstead developed by Jonathan Livermore in the late eighteenth century. The farm was later subdivided among the Livermore heirs and ultimately sold to a development company during the building boom that the area experienced in the late nineteenth century. In 1907 the Massachusetts Homeopathic Hospital purchased 7 acres of the former Livermore farm to construct a hospital for contagious disease.

Designed by the prominent local architectural firm of Kendall, Taylor & Company, the John C. Haynes Memorial Hospital became Boston's primary care facility for the treatment of contagious diseases during the first half of the twentieth century. The decline in homeopathy as an alternative medical system ultimately forced the hospital to close in the 1950s. It was re-opened in 1959 by the Hospitaller Brothers of St. John of God as a care center for the sick and elderly. The redevelopment plan for the St. John of God campus called for the enlargement of the facility to include residential, health care services, and assisted living units and create a premier continuum of care campus to serve senior citizens.



*The St. John of God Hospital Campus,
Boston, MA*

The St. John of God Hospital Campus was considered eligible for listing in the National Register of Historic Places by the Massachusetts Historical Commission. PAL's narrative history of the site was researched and written in accordance with a stipulation in a Memorandum of Agreement to serve as mitigation for the adverse effects of the proposed campus redevelopment.

PAL SERVICES

- **ARCHIVAL RESEARCH**
- **HISTORIC CONTEXT DEVELOPMENT**
- **FIELD SURVEY**
- **NARRATIVE HISTORY**